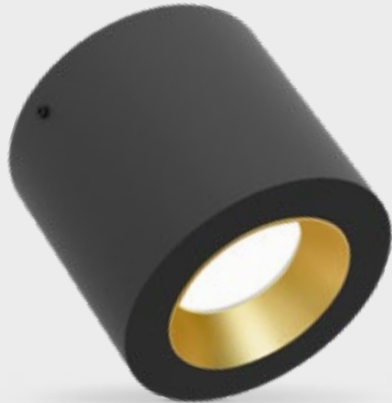
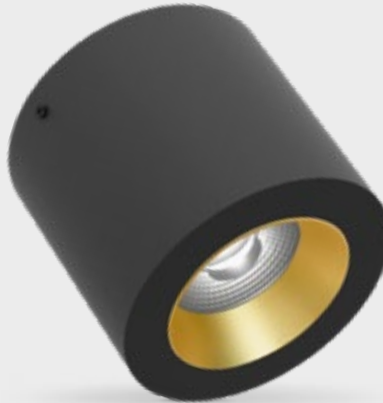


FEATURES

- Reliable solution without power supply
- Smooth flicker-free dimming to 0,1%
- Practically no inrush current
- Warm dim version available



HV-FD 80°



HV-FD 40°

COLOURS

Available colours:



Housing	Inside ring
RAL 9016	
Matt white	Gold (XX=61)
Matt white	Silver (XX=63)
Matt white	Copper (XX=64)
Matt white	Black (XX=62)



Housing	Inside ring
RAL 9005	
Matt black	Gold (XX=71)
Matt black	Silver (XX=74)
Matt black	Copper (XX=75)
Matt black	Black (XX=72)

Vector 100 HV-FD

Surface mounted

SPECIFICATIONS

Input voltage	220-240Vac
Beam angle (FWHM)	40° / 80°
Fixture material	Housing: Die cast aluminium / Optic: PMMA
Environment	Indoor
IK rate	IK03
Inrush current (peak / duration)	<100mA / 0 µs (soft start)
Max. quantity per type B 16A	360 pcs.
Mains surge capability (between L - N)	2 kV (differential mode (DM))
Mains surge capability (between L/N - PE)	4 kV (common mode (CM))
% Flicker (Conform IEEE P1789 Standard)	Typical 0,4%
Flicker index	<0,1
Dimming range	100-1%
THD	15%
Operating temperature (Ta)	-20°C / +45°C
Safety marks	EN60598 / EN62031 / EN62471
EMC compliance	EN55015
Colour consistency (SDCM)	MacAdam step 3
Warranty	7 years * (within the European Union and the countries of the Free Trade Association for products delivered after 1 May 2015)
Energy class	A

This luminaire contains built-in LED lamps. The lamps cannot be changed in the luminaire. EU 874/2012



IP20

VECTOR 100 220-240V



ITEM SPECIFICATIONS (PART A)

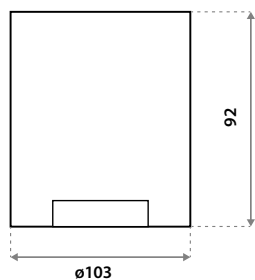
Description	Item code	Input	W	Lm	Lm/W	CRI (typ.)	UGR	Pf
Vector 100 HV-FD 2700K 600 Lm 40° Triac dim	7B2A03XX5A02	220-240V	10,5	600	57	93	23,2	0,99
Vector 100 HV-FD 3000K 600 Lm 40° Triac dim	7B2A03XX5C02	220-240V	10,3	600	58	93	23,2	0,99
Vector 100 HV-FD 4000K 600 Lm 40° Triac dim	7B2A03XX5E02	220-240V	10,1	600	59	93	23,2	0,99
Vector 100 HV-FD 2200-3000K 600 Lm 40° Triac dim	7B2A03XX5G02	220-240V	10,3	600	58	93	23,2	0,99
Vector 100 HV-FD 2700K 600 Lm 80° Triac dim	7B2A03XX5B02	220-240V	10,5	600	57	93	24,5	0,99
Vector 100 HV-FD 3000K 600 Lm 80° Triac dim	7B2A03XX5D02	220-240V	10,3	600	58	93	24,5	0,99
Vector 100 HV-FD 4000K 600 Lm 80° Triac dim	7B2A03XX5F02	220-240V	10,1	600	59	93	24,5	0,99
Vector 100 HV-FD 2200-3000K 600 Lm 80° Triac dim	7B2A03XX5H02	220-240V	10,3	600	58	93	24,5	0,99

ITEM SPECIFICATIONS (PART B)

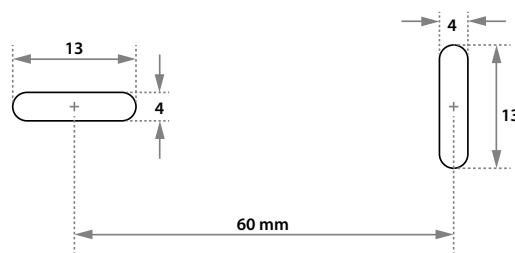
Description	Safety class	Energy class	Weight	Dimensions single carton	Quantity per carton	Expected lifespan (25°C)		
						L70B50	L80B50	L90B50
Vector 100 HV-FD 2700 600 Lm K 40° Triac dim	I	A	415 gr	105x105x105 mm	35 pcs	>70.000 hrs	>70.000 hrs	>54.000 hrs
Vector 100 HV-FD 3000K 600 Lm 40° Triac dim	I	A	415 gr	105x105x105 mm	35 pcs	>70.000 hrs	>70.000 hrs	>54.000 hrs
Vector 100 HV-FD 4000K 600 Lm 40° Triac dim	I	A	415 gr	105x105x105 mm	35 pcs	>70.000 hrs	>70.000 hrs	>54.000 hrs
Vector 100 HV-FD 2200-3000K 600 Lm 40° Triac dim	I	A	415 gr	105x105x105 mm	35 pcs	>70.000 hrs	>70.000 hrs	>54.000 hrs
Vector 100 HV-FD 2700K 600 Lm 80° Triac dim	I	A	415 gr	105x105x105 mm	35 pcs	>70.000 hrs	>70.000 hrs	>54.000 hrs
Vector 100 HV-FD 3000K 600 Lm 80° Triac dim	I	A	415 gr	105x105x105 mm	35 pcs	>70.000 hrs	>70.000 hrs	>54.000 hrs
Vector 100 HV-FD 4000K 600 Lm 80° Triac dim	I	A	415 gr	105x105x105 mm	35 pcs	>70.000 hrs	>70.000 hrs	>54.000 hrs
Vector 100 HV-FD 2200-3000K 600 Lm 80° Triac dim	I	A	415 gr	105x105x105 mm	35 pcs	>70.000 hrs	>70.000 hrs	>54.000 hrs

All values are measured at 230V (+/- 7%)

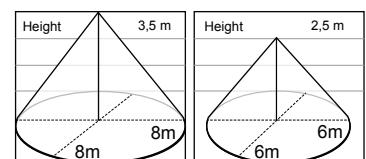
DIMENSIONS



FIXATION DIMENSIONS



DETECTION AREA



Manufacturer	Product ID	Type	Power	Wires*	Dimming range			
					HV-IC		HV-FD	
					min %	max %	min %	max %
ABB	6523U	RL	2-100	2	x	x	✓ 1,0	✓ 97
Busch&Jaeger	2247U	RL	60-500	2	x	x	✓ 0,0	✓ 98
Busch&Jaeger	2250U	R	60-600	2	2,0	63	✓ 0,3	✓ 100
Busch&Jaeger	6514 UJ-5	RC	20-420	3	7,0	✓ 97	10,0	✓ 100
Casambi	CBU-TED Bluetooth	RC	1-100	3	✓ 0,1	✓ 100	✓ 0,1	✓ 100
CTM Lyng	MDimLed	LED	1-200	3	✓ 0,6	✓ 100	✓ 0,0	✓ 100
Dimmax (Trump)	420SL	RLC	1-200	3	4,0	✓ 100	2,1	✓ 98
Drespa	814	R	60-400	2	x	x	x	x
Eaton LED	CDAU-01/04	RLC	0-250	3	2,0	✓ 100	2,0	✓ 100
Elko	315GLE	RC	20-315	2	1,5	✓ 95	✓ 0,2	✓ 96
Elko	400GLI	RL	40-400	2	x	x	✓ 0,0	✓ 98
Eltako	EUD61NPN-UC	RLC	400	3	5,5	✓ 100	2,9	✓ 95
Feller	40420	RLC	20-420	2	x	x	✓ 0,8	✓ 100
Feller	402001 LED	RLC	4-200	2	12,0	90	18,0	✓ 100
Feller	40300 RC	RC	20-300	2	6,0	✓ 100	6,8	✓ 95
Feller	40600 RL	RL	20-300	2	✓ 0,1	89	✓ 0,0	✓ 96
Feller Zepitron	3306	UNI	25-420	3	11,0	91	14,0	✓ 100
Gira	1184 00/101	R	60-200	2	x	x	✓ 0,2	✓ 97
IPAS	9240016	RC	35-400	2	3,0	79	4,0	✓ 100
ipas	HD300	LED	10-300	2	6,8	64	4,7	81
Legrand	0 02671	LED	3-75	3	7,4	✓ 96	6,3	✓ 96
Legrand (Bfinico)	L-N-NT4411N	LED	3-75	2	5,2	92	3,4	✓ 95
Lumiko /Klemko	D-PAF-200-LED	RC	1-200	2	✓ 0,1	93	✓ 0,0	✓ 98
Lutron	QSNE 4 AD	RC	0-800	3	0,0	0	0,0	0
Merten	MTN577899	RC	20-315	2	12,0	81	16,0	✓ 100
MK elements	K34100	LED	6-150	3	x	x	x	x
MK elements	K34103	LED	35-500	3	x	x	x	x
Niko	310-014XX	R	5-200	2	x	x	x	x
Niko	310-016	RL	50-400	2	6,0	✓ 96	2,0	✓ 99
Niko	310-017XX	RC	20-250	2	16,0	78	22,4	✓ 95
Niko	310-0190X	Uni	5-325	3	✓ 0,7	✓ 100	✓ 0,0	✓ 98
Niko	310-0260	RL	40-550	2	5,9	86	6,3	✓ 99
Niko	310-02701	LED	40-300	2	8,0	74	10,4	✓ 96
Niko	310-0280X	LED	2-100	3	2,2	✓ 100	4,7	✓ 96
Niko	310-0390X	Uni	3-200	2	1,5	92	✓ 0,0	✓ 95
Niko	330-0700	LED	5-350	3	✓ 0,7	✓ 100	✓ 0,1	✓ 100
Peha	433	R	20-250	2	✓ 0,1	92	✓ 0,0	94
Qbus	Dim02SA/500	uni	2-500	3	2,0	✓ 100	✓ 0,1	✓ 100
RAKO	RMT-500	RC	1-500	3	✓ 0,1	✓ 100	✓ 0,0	✓ 100
RAKO	RMT-PILL	RC	1-250	3	✓ 0,6	✓ 97	✓ 0,1	✓ 98
Schneider (Merten)	SBD315RC	RC	20-315	2	12,0	✓ 99	15,6	✓ 96
Schneider (Merten)	SBD400R-1/MTN5131	R	40-400	2	x	x	2,5	✓ 98
Schneider (Merten)	SBD600 RL	RL	40-600	2	x	x	✓ 0,0	✓ 96
Schneider (Merten)	SBD600RCRL	RLC	20-600	2	1,3	92	✓ 0,5	✓ 98
Schneider/Merten	MTN5171	RLC	10-420	2	5,8	80	8,0	✓ 99
Schneider/Merten	SBD200/MEG 5134	RLC	4-400	2	12,0	85	18,0	✓ 100
Simon Electric	DS9T2		5-315	3	✓ 0,2	✓ 97	✓ 0,1	✓ 100
Unilamp	KDT-500E	LED	5-500	2	8,0	85	13,0	94
Unilamp	KDT-500E2	LED	5-500	3	3,6	65	1,6	89
Unilamp/Luzense	KTD-500 E4	LED	5-500	2	1,6	82	✓ 0,4	✓ 100

✓ = Recommended x = Not recommended Please check our website for the latest information.

* 2 = No neutral required; 3 = Neutral required.