

FEATURES

- Made in the Netherlands from raw material to endproduct
- Low glare solution (<UGR 19)



Altra 68 LV

Fixed

SPECIFICATIONS

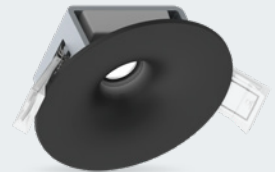
| | |
|------------------------------|---|
| Beam angle | 40°/80° |
| Color | White 9016 / Black 9005 |
| Fixture material | Frontring : Composite / Lens : PMMA |
| CCT | 2700K / 3000K / 4000K |
| CRI | 93 |
| IK rate | IK02 |
| IP rate | IP20 |
| Operating temperature | -20/ + 45 C |
| Safety marks | EN60598 |
| Colour consistency | MacAdam step 3 |
| Warranty | 5 years |
| Safety class | III |
| Energy class | These products contains a light source of energy efficiency class F (2700K/3000K) / E (4000K) |

This luminaire contains built-in LED lamps. There are no exchangeable parts inside the luminaire. EU 874/2012

¹ In applications with a flat roof (f.i. car showrooms) the temperatures may exceed 45°C. Please ask our sales office for a special driver.

COLOURS

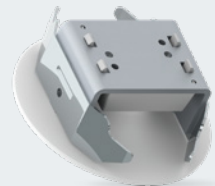
Available colours:



Matt white RAL 9016 (XX=MW)
Matt black RAL 9005 (XX=BL)

SPRINGS

Standard with Wire spring (gyproc/metal). Also available as below with Concrete spring (concrete/gyproc).

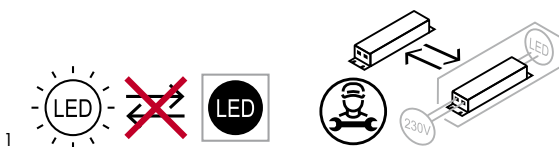


MADE IN HOLLAND

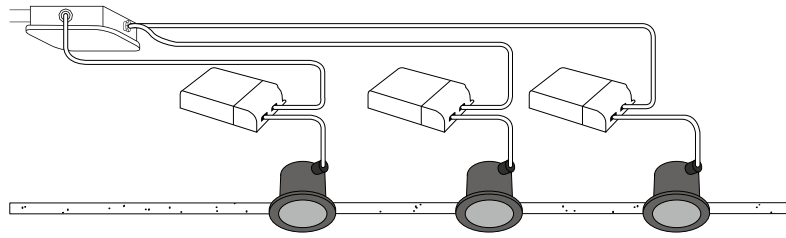
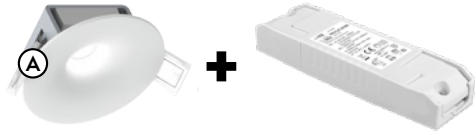
5-YEAR GUARANTEE

ECO

IP20



ALTRA 68 LV ^A



500 mA

ITEM SPECIFICATIONS

| Description | Item code | | Input | Vf | W | Lm | Lm/W | CRI (typ.) | UGR | Pf | Ripple | Inrush current | B-16A Fuse |
|--|--------------|--------------|-------|------|-----|-----|------|------------|------|-----------|-------------|----------------|------------|
| | WS | CS | | | | | | | | | | | |
| Altra 68 LV 500mA 600Lm 2700K 40° No dim | LE3R03XX9R02 | LE3R03XX5Y02 | 500mA | 11.9 | 6,6 | 600 | 91 | 93 | 15.2 | >0.85 <3% | ≤6.9A 2.6μS | 72 pcs | |
| Altra 68 LV 500mA 625Lm 3000K 40° No dim | LE3S03XX9R02 | LE3S03XX5Y02 | 500mA | 11.9 | 6,6 | 625 | 95 | 93 | 15.2 | >0.85 <3% | ≤6.9A 2.6μS | 72 pcs | |
| Altra 68 LV 500mA 650Lm 4000K 40° No dim | LE3T03XX9R02 | LE3T03XX5Y02 | 500mA | 11.9 | 6,6 | 650 | 98 | 93 | 15.2 | >0.85 <3% | ≤6.9A 2.6μS | 72 pcs | |
| Altra 68 LV 500mA 600Lm 2700K 40° Dali | LE3R03XX9P02 | LE3R03XX5W02 | 500mA | 11.9 | 6,6 | 600 | 91 | 93 | 15.2 | >0.94 <3% | ≤7.0A 16μS | 71 pcs | |
| Altra 68 LV 500mA 625Lm 3000K 40° Dali | LE3S03XX9P02 | LE3S03XX5W02 | 500mA | 11.9 | 6,6 | 625 | 95 | 93 | 15.2 | >0.94 <3% | ≤7.0A 16μS | 71 pcs | |
| Altra 68 LV 500mA 650Lm 4000K 40° Dali | LE3T03XX9P02 | LE3T03XX5W02 | 500mA | 11.9 | 6,6 | 650 | 98 | 93 | 15.2 | >0.94 <3% | ≤7.0A 16μS | 71 pcs | |
| Altra 68 LV 500mA 600Lm 2700K 80° No dim | LE3R03XX9M02 | LE3R03XX4M02 | 500mA | 11.9 | 6,6 | 600 | 91 | 93 | 21.6 | >0.85 <3% | ≤6.9A 2.6μS | 72 pcs | |
| Altra 68 LV 500mA 625Lm 3000K 80° No dim | LE3S03XX9M02 | LE3S03XX4M02 | 500mA | 11.9 | 6,6 | 625 | 95 | 93 | 21.6 | >0.85 <3% | ≤6.9A 2.6μS | 72 pcs | |
| Altra 68 LV 500mA 650Lm 4000K 80° No dim | LE3T03XX9M02 | LE3T03XX4M02 | 500mA | 11.9 | 6,6 | 650 | 98 | 93 | 21.6 | >0.85 <3% | ≤6.9A 2.6μS | 72 pcs | |
| Altra 68 LV 500mA 600Lm 2700K 80° Dali | LE3R03XX9H02 | LE3R03XX4H02 | 500mA | 11.9 | 6,6 | 600 | 91 | 93 | 21.6 | >0.94 <3% | ≤7.0A 16μS | 71 pcs | |
| Altra 68 LV 500mA 625Lm 3000K 80° Dali | LE3S03XX9H02 | LE3S03XX4H02 | 500mA | 11.9 | 6,6 | 625 | 95 | 93 | 21.6 | >0.94 <3% | ≤7.0A 16μS | 71 pcs | |
| Altra 68 LV 500mA 650Lm 4000K 80° Dali | LE3T03XX9H02 | LE3T03XX4H02 | 500mA | 11.9 | 6,6 | 650 | 98 | 93 | 21.6 | >0.94 <3% | ≤7.0A 16μS | 71 pcs | |

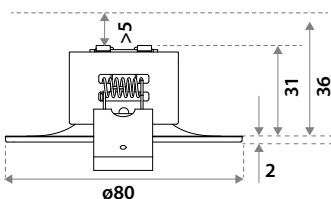
| Description | Safety class | Energy class | Weight | Dimensions carton | Quantity per carton | Expected lifespan B10 (25°C) | | |
|-------------------------------|--------------|--------------|--------|-------------------|---------------------|------------------------------|-------------|------------|
| | | | | | | L70B10 | L80B10 | L90B10 |
| Altra 68 LV 500mA 600Lm 2700K | III | F | 122 gr | 105x105x61 mm | 42 pcs | 102.000 hrs | 102.000 hrs | 49.000 hrs |
| Altra 68 LV 500mA 625Lm 3000K | III | F | 122 gr | 105x105x61 mm | 42 pcs | 102.000 hrs | 102.000 hrs | 49.000 hrs |
| Altra 68 LV 500mA 650Lm 4000K | III | E | 122 gr | 105x105x61 mm | 42 pcs | 102.000 hrs | 102.000 hrs | 49.000 hrs |

All values are measured at 230V (+/- 7%)

CHOOSE YOUR LV LUMEN OUTPUT

| | mA | W | Lumen Output | | | Lumen / Watt | | | Driver types | |
|-----------------|-----|-----|--------------|-------|-------|--------------|-------|-------|---------------|--------------|
| | | | 2700K | 3000K | 4000K | 2700K | 3000K | 4000K | KGP No dim 7W | KGP Dali 20W |
| Special request | 350 | 4,1 | 430 | 450 | 470 | 105 | 110 | 115 | CC7W100-700 | CC20W100-800 |
| Standard | 500 | 5,8 | 600 | 625 | 650 | 103 | 108 | 112 | CC7W100-700 | CC20W100-800 |

DIMENSIONS



The lifetime expectation is measured in a recess ceiling with normal air ventilation (Ta 25°C). When build directly in the concrete material with the power supply on top of the luminary it is possible to keep the standard expected lifetime. If the airflow is less than 5mm (for instance build in a very small plastic box or covered with insulation material) it is advisable to set the input current of the driver to 350mA to keep the same lifetime.