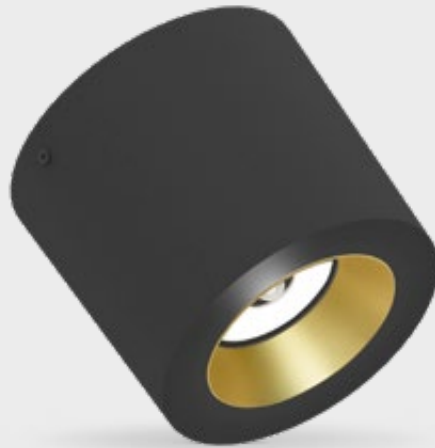


FEATURES

- Reliable solution without power supply
- Practically no inrush current
- Integrated PIR sensor



COLOURS

Available colours:



Nr	Housing	Inside ring
	RAL 9016	
XX=61	Matt white / Gold	
XX=63	Matt white / Silver	
XX=62	Matt white / Black	
XX=65	Matt white / White	



Nr	Housing	Inside ring
	RAL 9005	
XX=71	Matt black / Gold	
XX=74	Matt black / Silver	
XX=72	Matt black / Black	
XX=76	Matt black / White	

SensorVector 100 HV

Fixed

DRIVERLESS

Can be connected directly to 220-240V

SPECIFICATIONS

Beam angle (FWHM)	80°
Fixture material	Housing: Die cast aluminium / Reflector glass: Polycarbonate
Environment	Indoor
IK rate	IK03
Operating temperature (Ta)	-20°C / +30°C ¹
Safety marks	EN60598 / EN62031 / EN62471
EMC compliance	EN55015
Colour consistency (SDCM)	MacAdam step 3
Warranty	7 years * (within the European Union and the countries of the Free Trade Association for products delivered after 1 May 2015)
Safety class	II
Energy class	A
Detection range	120°
Turn-on time	200 ms
Inrush current	0 mA (max. 316 pcs. per type B16 Amp)
Surge protection	L-N > 1kV; L-E, N-E > 2kV
Audible noise	21 dB
Time setting	4 min. (cannot be changed)

This luminaire contains built-in LED lamps. There are no exchangeable parts inside the luminaire. EU 874/2012

¹ In applications with a flat roof (i.e. car showrooms) the temperatures may exceed 30°C. Please ask our sales office for a special driver.

MADE IN HOLLAND

7 YEAR WARRANTY

ECO

Sensor luminaires turn on for 4 minutes after detecting movement.



IP20

SENSORVECTOR 100 HV **3000/4000K**



ITEM SPECIFICATIONS (PART A)

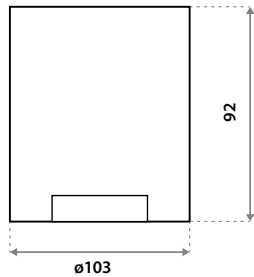
Description	Item code	Input	W	Lm	Lm/W	CRI (typ.)	UGR	Pf
SensorVector 100 HV 600 Lm 3000K 80°	7B2S03XX5D02	220-240V	15,0	600	40	83	23.4	0.99
SensorVector 100 HV 600 Lm 4000K 80°	7B2S03XX5F02	220-240V	15,0	600	40	83	23.4	0.99

ITEM SPECIFICATIONS (PART B)

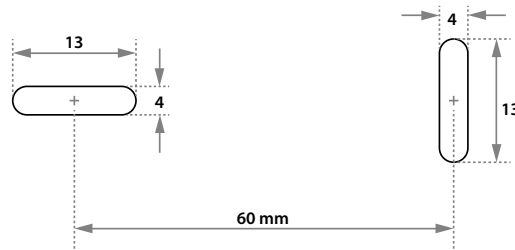
Description	Safety class	Energy class	Weight	Dimensions single carton	Quantity per carton	Expected lifespan (25°C)		
						L70B50	L80B50	L90B50
SensorVector 100 HV 600 Lm 3000K 80°	II	A	468 gr	105x105x105 mm	35 pcs	>54.000 hrs	>54.000 hrs	>54.000 hrs
SensorVector 100 HV 600 Lm 4000K 80°	II	A	468 gr	105x105x105 mm	35 pcs	>54.000 hrs	>54.000 hrs	>54.000 hrs

All values are measured at 230V (+/- 7%)

DIMENSIONS



FIXATION DIMENSIONS



DETECTION AREA

