

FEATURES

- Bartenbach 'Dark Light' technology
- The lighting solution disappears into the ceiling
- Protected by 2 patents

Bartenbach
lighting optics



Felta

Fixed

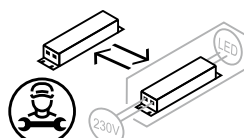
SPECIFICATIONS

Beam angle	60° (35° on request)
Fixture material	Solid aluminium
CCT	2700K / 3000K / 4000K
CRI	82
UGR	<10*
IK rate	IK09
IP rate	IP20
Operating temperature	-20-45°C
Safety marks	EN60598
Colour consistency	MacAdam step 3
Warranty	7 years
Safety class	III
Energy class	These products contains a light source of energy efficiency class F (2700K/3000K) / E (4000K)

This luminaire contains built-in LED lamps. There are no exchangeable parts inside the luminaire. EU 874/2012

* This luminaire is glare free because the Light Emitting Surface is completely integrated behind the tube opening.

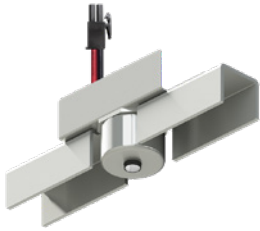
According to the CIE 147-2002 norms it is not possible to calculate a reliable UGR value for this kind of optical solution.



IP20

FELTA LV A

700 mA



ITEM SPECIFICATIONS

Description	Item code	Input	Vf	W	Lm	Lm/W	CRI (typ.)	Pf	Ripple	Inrush current	B-16A Fuse
Felta LV 700mA 550 Lm 2700K Dim 60°	FL2803AL27E2	700mA	11,9	8,4	550	65	82	x	x	x	x
Felta LV 700mA 600 Lm 3000K Dim 60°	FL2803AL30E2	700mA	11,9	8,4	600	71	82	x	x	x	x
Felta LV 700mA 650 Lm 4000K Dim 60°	FL2803AL40E2	700mA	11,9	8,4	650	77	82	x	x	x	x

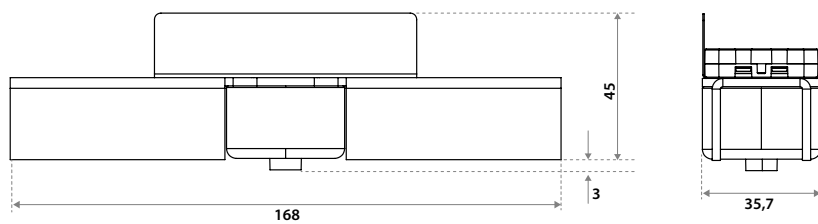
Description	Safety class	Energy class	Weight	Dimensions carton	Quantity per carton	Expected lifespan B10 (25°C)		
						L70B10	L80B10	L90B10
Felta LV 700mA 550 Lm 2700K Dim 60°	III	F	128 gr	390x360x330 mm	18 pcs	166.000 hrs	105.000 hrs	50.000 hrs
Felta LV 700mA 600 Lm 3000K Dim 60°	III	F	128 gr	390x360x330 mm	18 pcs	166.000 hrs	105.000 hrs	50.000 hrs
Felta LV 700mA 650 Lm 4000K Dim 60°	III	E	128 gr	390x360x330 mm	18 pcs	166.000 hrs	105.000 hrs	50.000 hrs

All values are measured at 230V (+/- 7%)

CHOOSE YOUR LV LUMEN OUTPUT

	mA	W	Lumen Output			Lumen / Watt			Driver types			
			2700K	3000K	4000K	2700K	3000K	4000K	KGP No dim	KGP Triac	TCI Casambi	KGP Dali
<i>Special request</i>	350	4,2	300	325	350	67	72	83	CC36W150-900	CC40W150-1050	127648	CC36W150-900
<i>Special request</i>	500	5,3	400	450	475	70	79	89	CC36W150-900	CC40W150-1050	127648	CC36W150-900
Standard	700	8,4	550	600	650	65	71	77	CC36W150-900	CC40W150-1050	127648	CC36W150-900

DIMENSIONS

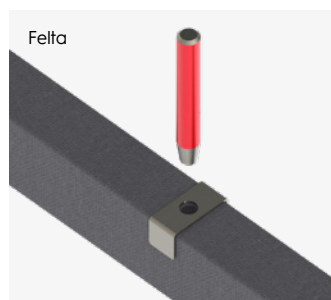


ITEM SPECIFICATIONS (ACCESSORIES)

Description	Specification	Item code	Weight
-------------	---------------	-----------	--------

K Hole puncher Felta/Groovy Felta Groove 10mm incl. alignment tool 001J03RE0000

K Hole puncher Felta/Groovy



By clamping a block of wood in a vise, it is possible to make a hole in the slot yourself using a hole punch and an alignment tool.

PSU (INCL. LV CABLE SET 4L)



PSU KGP 36W No dim NFC*
163x30x21 mm
Exp. lifespan 100.000 hrs



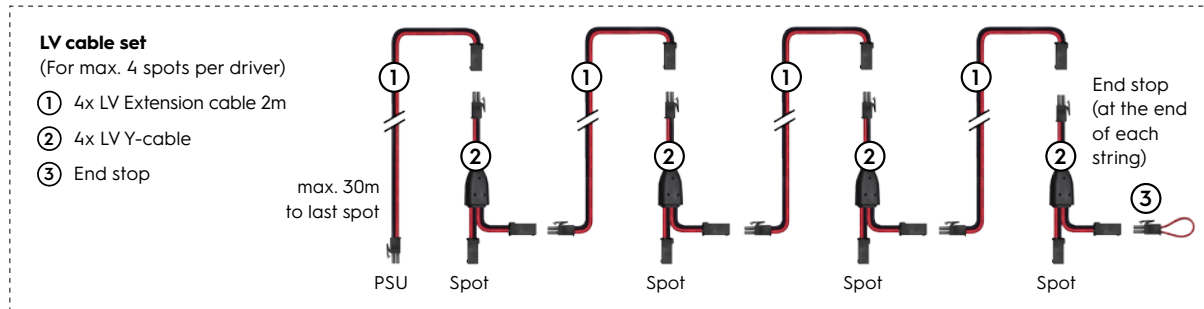
PSU KGP 36W Dali NFC*
163x30x21 mm
Exp. lifespan 100.000 hrs



PSU KGP 40W Triac NFC*
163x30x21 mm
Exp. lifespan 100.000 hrs



PSU TCI 38W Casambi NFC*
108x44x30 mm
Exp. lifespan 100.000 hrs



Item specifications (PSU)

Driver types	Supplier name	Item code	Input	Watt	Max mA	Max Vf	Pf	Eff.	Inrush current	B-16A Fuse
Ⓟ PSU KGP 36W 700mA No-dim + LV cable set 4L	CC36W150-900	05PH03MLMT00	220-240V AC/DC	36W	150-900	40	>0.95	88%	≤8,5A 16μS	59 pcs
Ⓟ PSU KGP 36W 700mA Dali + LV cable set 4L	CC36W150-900	05PJ03MLMT00	220-240V AC/DC	36W	150-900	40	>0.95	88%	≤8,5A 16μS	59 pcs
Ⓟ PSU KGP 40W 700mA Triac + LV cable set 4L	CC40W150-900	05QF03MLMT00	220-240V AC/DC	40W	150-1050	42	0.95	86%	10A 16μS	50 pcs
Ⓟ PSU TCI 38W 700mA Casambi + LV cable set 4L	127630	05QG03MLMT00	220-240V AC/DC	38W	300-1050	36	0.95	>90%	5A 50μS	50 pcs

All values are measured at 230V (+/- 7%). *Dali is not suitable for the HV Distributor system.

RECOMMENDED DIMMERS FOR TRIAC 40W DRIVER

Manufacturer	Model	Q'ty of parallel connection
ABB	6519 U	13
ABB	6526 U	12
JUNG	1224 LED UDE	12
Berker	2861	12
JUNG	254 UDIE 1	13
JUNG	225 TDE	12
EGANT	U321V2	12
Schneider	SBD200LED	12
Schneider	SBD315RC	14
Merten	SBD200LED	12

Manufacturer	Model	Q'ty of parallel connection
Berker	2874	12
Eltako	EUD61NPL-230V	10
Eltako	EUD12NPN-UC	10
Eltako	EUD12D-UC	10
Eltako	EUD61NP-230V	10
Eltako	DTD55-230V-wg	10
Eltako	DTD55L-230V-wg	10
GIRA	Universal-LED-Dimmer Mini2440 00	9
EHMANN	LED-Dimmer T46.08	10
JUNG	Drehldimmer Universal LED1731DD	10

Leading Edge Dimmer list only on request -/ or confirmed by KGP Electronics

*NFC INSTRUCTION VIDEO



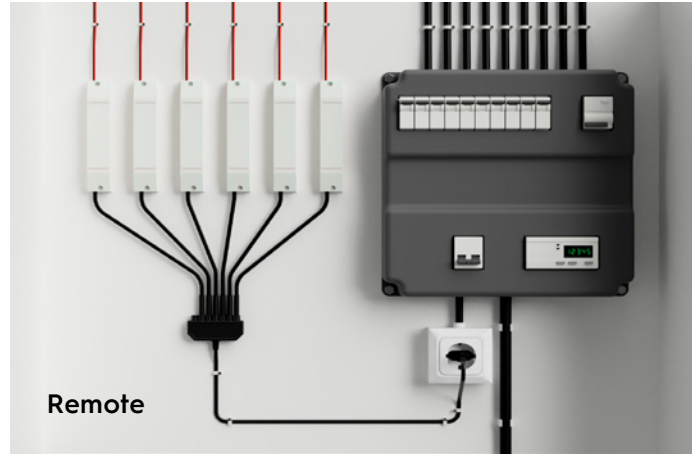
KGP CLO in development
TCI NFC & CLO in development

INSTALLATION PSU

We recommend placing the drivers decentrally, but if this is not possible, it is better to place a mains filter on the power group because it might be difficult to replace a defective driver. For instance: Littlefuse LSP05G240SX333 or Littlefuse LSP05G277SX333

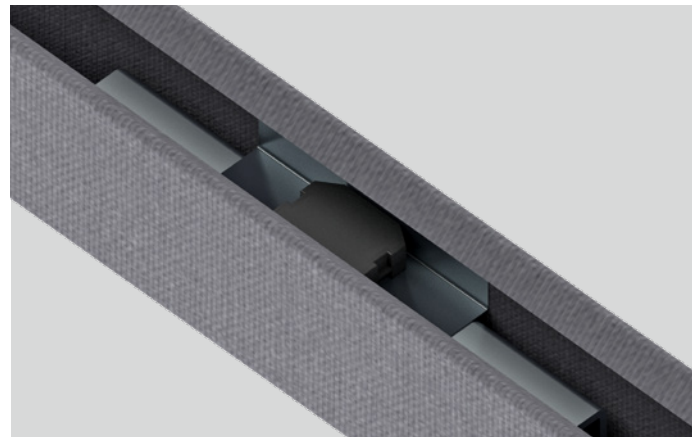
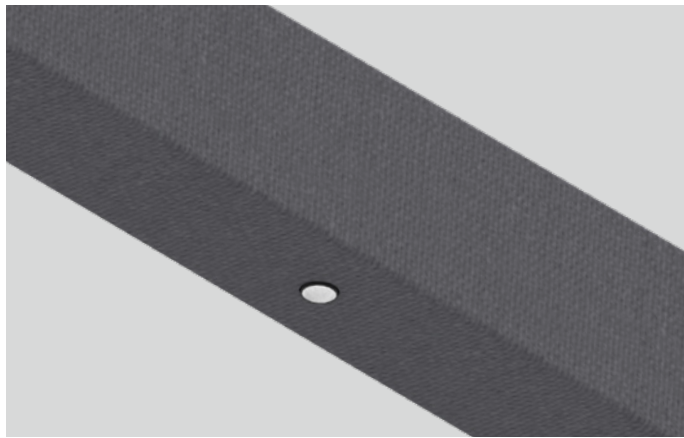


The drivers can be attached to the cross rail with double sided tape (not provided). Due to the difficult accessability of the power supply, we recommend using a mains filter to increase the lifespan of the power supply.



It is recommended to install the power supplies in an easily accessible place. By using the LV extension cable, the distance to the last spot can be increased to a maximum of 30 meters.

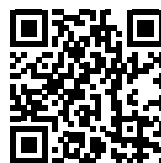
FELTA FOR TEXTILE HEARTFELT® LINEAR



This Felta is intended for integration into the TEXTILE Heartfelt® Linear. Only the tube of the patented optics sticks through the hole that can be made in the panel, the rest of the lighting is completely invisible. The top bracket not only provides extra cooling, but also ensures that the optics remain properly positioned in the hole.

PLACING FELTA IN TEXTILE HEARTFELT® LINEAR

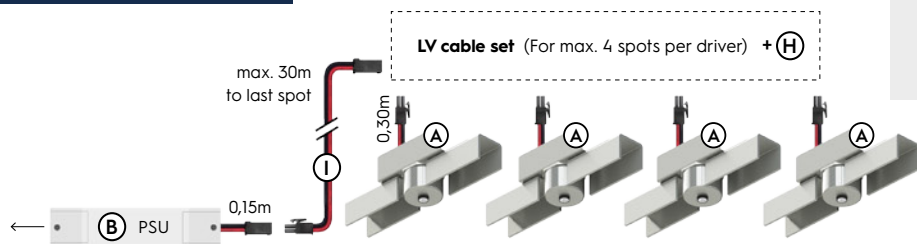
Position black tube into the hole



Scan de QR for more info and a video.

PLUG & PLAY CABLES SYSTEM

(C)
GST18 Plug & Play Solutions (Assembled to driver)



- FEATURES**
- Professional 16A Plug&Play system
 - 3 or 5 wire system
 - Widely spread in lighting market



Item specifications (accessories)

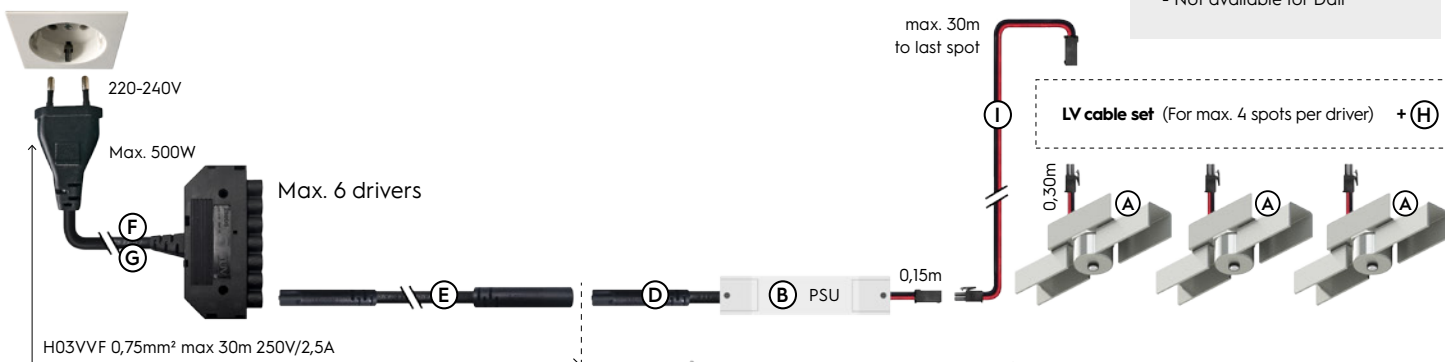
Description	Class	Length	Item code
(C1) Euro plug incl. cable	II	2.0 m	015203BL1200
(C2) Schuko plug incl. cable	I	1.5 m	1C5203BLA000
(C3) UK plug incl. cable	II	2.0 m	0A5203BL1200
(C4) GST18-3 male incl. cable 2x0,75mm ²	II	0.3 m	455203BL0000
(C4) GST18-3 male incl. cable 2x0,75mm ²	II	3.0 m	455203BL1500
(C4) GST18-3 male incl. cable 3x0,75mm ²	I	0.3 m	4A5203BL0000
(C4) GST18-3 male incl. cable 3x0,75mm ²	I	3.0 m	4A5203BL1500
(C5) 1-10V/Dali GST18-5 male incl. cable 4x0,75mm ²	II	0,3 m	655203BL0000
(C5) 1-10V/Dali GST18-5 male incl. cable 4x0,75mm ²	II	3,0 m	655203BL1500

Description	Class	Length	Item code
(C6) Dali BST14i male incl. cable	III	0.5 m	095203BL0000
(C6) Dali BST14i male incl. cable	III	3.0 m	095203BL1500
(C7) GST18-3 T-splitter male incl. cable	II	0.2 m	459203BL0000
(C7) GST18-3 T-splitter male incl. cable	I	0.2 m	4A9203BL0000
(C8) GST18-5 T-splitter male	I / II	x	659203BU0000
(C9) 1-10V/Dali BST14i T-splitter male incl. cable	III	0,2 m	099203BL0000

HV DISTRIBUTOR SYSTEM*

*Not for Dali.

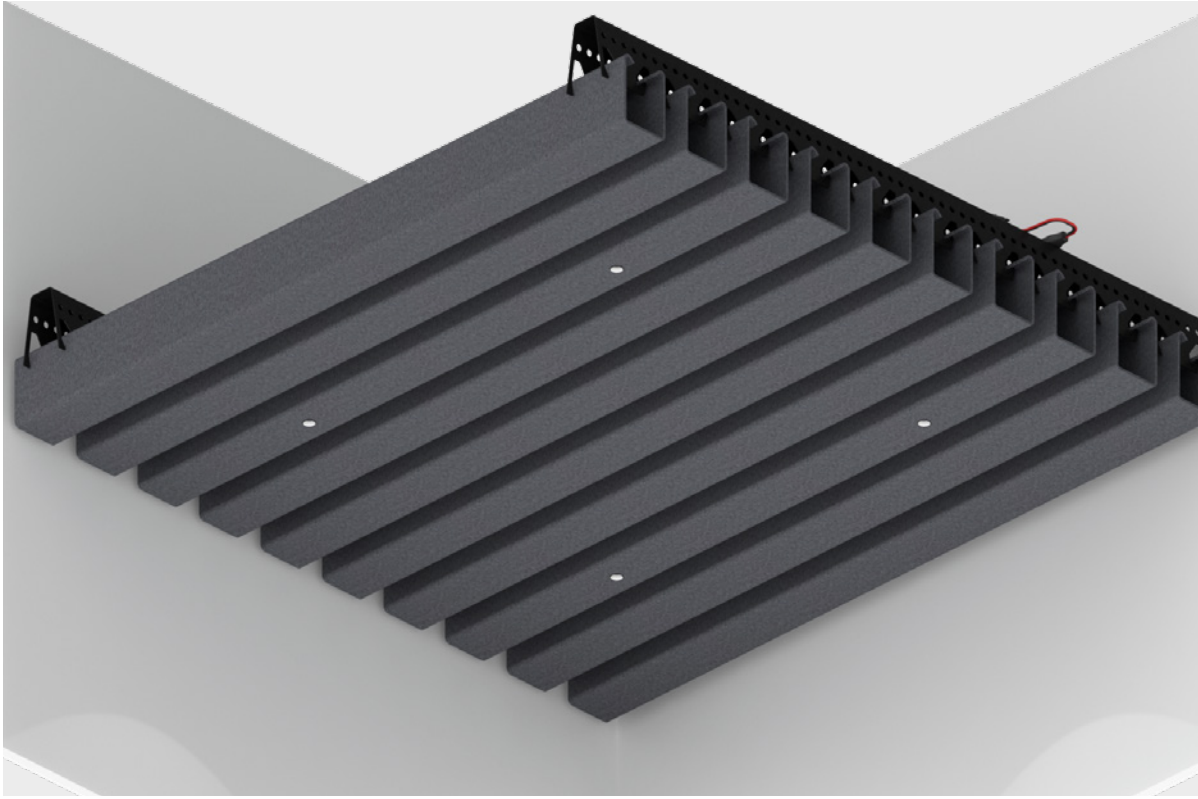
- FEATURES**
- Basic 2,5A Plug&Play system
 - 2 wire system
 - Not available for Dali



Item specifications (accessories)

Description	Specification	Item code	Weight
(D) HV Plug 0,15m	HV Ø7,6mm 0,15m male (0,75mm ²)	6J5203BL1B02	(Assembled to driver, not for Dali drivers)
(E) HV Extension cable	HV Ø7,6mm 2m m/f (0,75mm ²)	6F5203BL1202	78 gr
(F) HV Distributor 6x + Europlug	HV Ø7,6mm 6x + cable 1m 2,5A / GST18 3P	665203BL2502	148 gr
(G) HV Distributor 6x + GST18 3P	HV Ø7,6mm 6x + cable 1m 2,5A / GST18 3P	665203BL1502	148 gr
(H) LV Extension cable 2m (more distance between the spots)	LV 2m m/f (0,34mm ²)	6B5203BL1202	30 gr
(I) LV Extension cable 10m (for remote Power Supply Unit)	LV 10m m/f (0,34mm ²)	6E5203BL1202	120 gr

APPLICATION



Frontside
Heartfelt®
Linear
with Felta



Backside
Heartfelt®
Linear
with Felta